



SC 160 II

Self-contained LED lantern for buoys and beacons

SC 160 II is a self-contained LED lantern with best in class optical performance for fixed and floating structures with longer range. The lantern includes solar panels, battery and charge controller. This lantern is designed for harsh marine environments and for long uninterrupted operation.

- Range up to 10 NM ($T_c=0,74$) 14 NM ($T_c=0,85$) depending on geographical location
- Standard IALA colours red, green, white, yellow
- Lantern made of rugged injection moulded aluminium housing and body of UV resistant polyethylene
- Integrated flasher with day-light switch and solar charger
- Standard VRLA battery and ventilated battery compartment
- Adjustable intensity and range
- Available with narrow (5°) or wide (10°) vertical divergence
- Programmable with Bluetooth Control mobile app up to 50 m radius
- Other wireless programming options available such as Sabik Easy Programmer or PC/USB interface
- Integrated event log for 365 days
- Optionally integrated GPS synchronization and GSM Remote monitoring
- External charge port or external solar module
- Available with AIS option



Integrated AIS

- Available in two models: Type 1 (FATDMA) and Type 3 (RATDMA)
- AIS transponder integrated in the top part of the lantern
- Integrated GPS antenna and external VHF antenna included in the delivery
- Extremely low power consumption when used as Type 1 <math><45\text{mW}</math> with 1 message/3 minutes (about 0,09 Ah/day)
- Support messages: 6 and 21
- Supports up to 10 virtual Aton:s

Optical Performance

Maximum fixed intensity SC 160 IIN (5° @ 50% peak intensity)

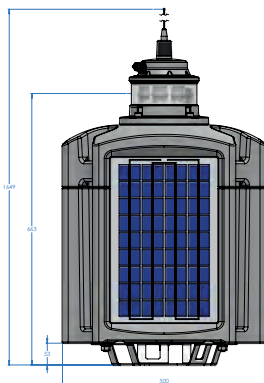
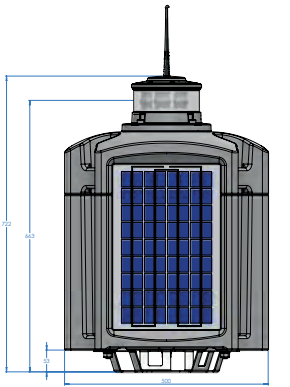
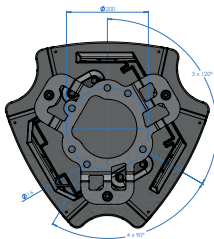
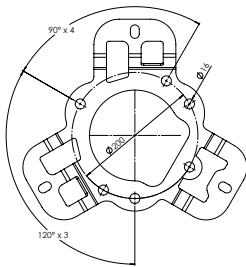
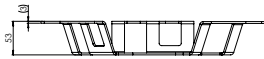
	1150 cd	1200 cd	1000 cd	1850 cd
Maximum power consumption	13 W	16 W	16 W	16 W

Maximum fixed intensity SC 160 IIW (10° @ 50% peak intensity)

	620 cd	720 cd	620 cd	1100 cd
Maximum power consumption	13 W	16 W	16 W	16 W

Main Technical Specification

Lens visual/Mechanical diameter	160 mm
Lens material	UV stabilized acrylic
Light source	High Power Light Emitting Diodes (LEDs)
Vertical divergence options	5°@50% of peak intensity (FWHM) 10°@50% of peak intensity (FWHM)
Solar modules	3 x 11 W
Battery	VRLA GEL-Type, 60Ah/12V
Weight	35 Kg
Overall height	669 mm
Overall width	500 mm dia.
Power consumption	13W - 16W
Installation	3 x M12 on 330 mm dia.



Order Overview SC 160 II

SC160 II with VRLA Battery

N = Narrow (5° @ 50 % peak intensity)		W = Wide (10° @ 50 % peak intensity)	
Red	SC-160-2-NVR	Red	SC-160-2-WVR
Yellow	SC-160-2-NVY	Yellow	SC-160-2-WVY
Green	SC-160-2-NVG	Green	SC-160-2-WVG
White	SC-160-2-NVW	White	SC-160-2-WVW

Example: SC-160-2-WVR-4

- SC-160-2-WVR is the code for SC160 II with VRLA battery and wide lens in red
- 4 is a selection of option 4L GPS sync including GPS antenna

Option matrix

GPS sync	Integrated GPS sync including GPS antenna
OPT 4L	
LightGuard GSM + GPS	Integrated GSM/GPS based monitoring including GSM/GPS antennas
OPT 9L	
Automatic Identification System	OPT AIS 1: Lantern with integrated AIS type 1 OPT AIS 3: Lantern with integrated AIS type 3 Refer page 140
OPT AIS	